

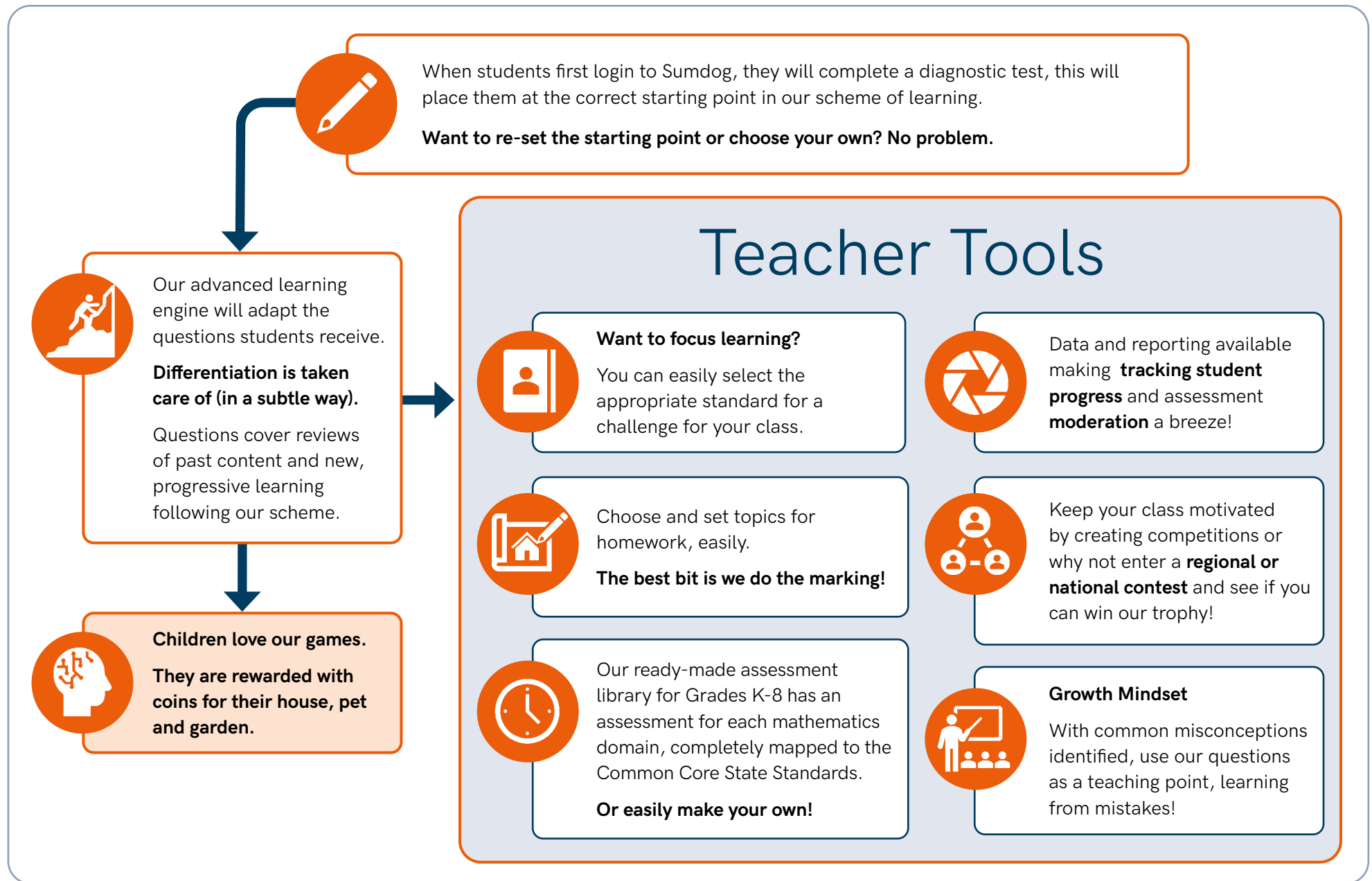


# Mathematics program of study: Virginia Standards for Mathematics

## Sumdog Scheme of Learning Kindergarten – Grade 8

Use our handy scheme of learning to help with your planning, tracking and monitoring

# How to use the Sumdog Scheme of Learning





Add with 1 <b>CE.K.6_1</b>	Half/Doubles <b>CE.K.6_9</b>	Calendar <b>MG.K.8_1</b>	Count Up or Down by 1 <b>NS.K.3.a_1</b>
Add with 2 <b>CE.K.6_2</b>	Subtract from 10 <b>CE.K.6_10</b>	Compare Measures <b>MG.K.9_1</b>	Count Down by 1 <b>NS.K.3.b_1</b>
Add with 3 <b>CE.K.6_3</b>	Subtract from 11 or 12 <b>CE.K.6_11</b>	Count Up to 25 Objects <b>NS.K.1.a_1</b>	Count Down by 1 <b>NS.K.3.c_1</b>
Add with 4 <b>CE.K.6_4</b>	Subtract from 3, 4, or 5 <b>CE.K.6_12</b>	Count Up to 5 Objects <b>NS.K.1.a_2</b>	Count Up by 1 <b>NS.K.3.c_2</b>
Add with 5 <b>CE.K.6_5</b>	Subtract from 6 or 7 <b>CE.K.6_13</b>	Tens and Ones <b>NS.K.1.a_3</b>	Count Up or Down by 1 <b>NS.K.3.c_3</b>
Add with 6 or 7 <b>CE.K.6_6</b>	Subtract from 8 or 9 <b>CE.K.6_14</b>	Numbers in Words <b>NS.K.1.b_1</b>	Ten More <b>NS.K.3.d_1</b>
Add with 8 or 9 <b>CE.K.6_7</b>	2D Shapes <b>MG.K.10.a_1</b>	Compare Numbers <b>NS.K.2.a_1</b>	Half/Doubles <b>NS.K.5_1</b>
Addition and Subtraction Word Problems <b>CE.K.6_8</b>	2D Shapes <b>MG.K.10.b_1</b>	Order Numbers <b>NS.K.2.a_2</b>	

## Strands (Kindergarten - Grade 5):

- Computation and Estimation (CE)
- Measurement and Geometry (MG)
- Probability and Statistics (PS)
- Patterns, Functions and Algebra (PFA)
- Number and Number Sense (NS)

Highlight  
and  
annotate  
me

**HINT:**  
You can focus  
learners easily  
on any skill to  
match your  
classroom  
lesson



Addition and Subtraction Word Problems

**CE.1.6\_1**

Subtract from 13 or 14

**CE.1.6\_2**

Subtract from 15, 16, 17, or 18

**CE.1.6\_3**

Questions with the Same Answers

**CE.1.7.b\_1**

Subtract Doubles

**CE.1.7.b\_2**

Halves

**MG.1.10\_1**

Measure Length

**MG.1.10\_2**

2D Shapes

**MG.1.11.a\_1**

Money Less Than \$1

**MG.1.8\_1**

Money to \$2

**MG.1.8\_2**

Time to 15-Minute Accuracy

**MG.1.9.a\_1**

Time to the Half Hour

**MG.1.9.a\_2**

Calendar

**MG.1.9.b\_1**

Count in 1s

**NS.1.1.a\_1**

Skip Count

**NS.1.1.d\_1**

Position

**NS.1.3\_1**

Halves

**NS.1.4.b\_1**

Sequences

**PFA.1.14\_1**

Skip Count

**PFA.1.14\_2**

Picture Graphs

**PS.1.12.b\_1**

Tables

**PS.1.12.b\_2**

## Strands (Kindergarten - Grade 5):

■ Computation and Estimation (CE)

■ Patterns, Functions and Algebra (PFA)

■ Measurement and Geometry (MG)

■ Number and Number Sense (NS)

■ Probability and Statistics (PS)

Highlight  
and  
annotate  
me

**HINT:**  
You can focus  
learners easily  
on any skill to  
match your  
classroom  
lesson



Inverse Relationship <b>CE.2.5.a_1</b> ■	Add with Multiples of 10 <b>CE.2.6.b_10</b> ■	Subtract 100s <b>CE.2.6.b_20</b> ■	Subtract within 1,000 <b>CE.2.6.c_3</b> ■
Estimate Sums and Differences <b>CE.2.6.a_1</b> ■	Add within 10 <b>CE.2.6.b_11</b> ■	Subtract 10s <b>CE.2.6.b_21</b> ■	More Than One Line of Symmetry <b>MG.2.12.b_1</b> ■
Add 1-Digit and 2-Digit Numbers <b>CE.2.6.b_1</b> ■	Add within 20 <b>CE.2.6.b_12</b> ■	Subtract 1s <b>CE.2.6.b_22</b> ■	One Line of Symmetry <b>MG.2.12.b_2</b> ■
Add 100s <b>CE.2.6.b_2</b> ■	Column Addition <b>CE.2.6.b_13</b> ■	Subtract 2-Digit Numbers <b>CE.2.6.b_23</b> ■	2D Shapes <b>MG.2.13_1</b> ■
Add 10s <b>CE.2.6.b_3</b> ■	Column Subtraction <b>CE.2.6.b_14</b> ■	Subtract with Multiples of 10 <b>CE.2.6.b_24</b> ■	3D Shapes <b>MG.2.13_2</b> ■
Add 1s <b>CE.2.6.b_4</b> ■	Forms of Numbers <b>CE.2.6.b_15</b> ■	Subtract within 10 <b>CE.2.6.b_25</b> ■	Money Amounts <b>MG.2.7.a_1</b> ■
Add 2-Digit Numbers <b>CE.2.6.b_5</b> ■	Inverse Relationship <b>CE.2.6.b_16</b> ■	Subtract within 20 <b>CE.2.6.b_26</b> ■	Add and Subtract with Money <b>MG.2.7.b_1</b> ■
Add Four 1-Digit Numbers <b>CE.2.6.b_6</b> ■	Part-Part-Whole <b>CE.2.6.b_17</b> ■	Take Away within 20 <b>CE.2.6.b_27</b> ■	Money Amounts <b>MG.2.7.b_2</b> ■
Add Four Numbers <b>CE.2.6.b_7</b> ■	Related Questions <b>CE.2.6.b_18</b> ■	Add within 1,000 <b>CE.2.6.c_1</b> ■	Measurement <b>MG.2.8.a_1</b> ■
Add Three Numbers <b>CE.2.6.b_8</b> ■	Subtract 1-Digit Numbers from 2-Digit Numbers <b>CE.2.6.b_19</b> ■	Addition and Subtraction Word Problems <b>CE.2.6.c_2</b> ■	Measurement <b>MG.2.8.b_1</b> ■

### Strands (Kindergarten - Grade 5):

- Computation and Estimation (CE)
- Measurement and Geometry (MG)
- Probability and Statistics (PS)
- Patterns, Functions and Algebra (PFA)
- Number and Number Sense (NS)

Highlight  
and  
annotate  
me

**HINT:**  
You can focus  
learners easily  
on any skill to  
match your  
classroom  
lesson



Clocks <b>MG.2.9_1</b> <span style="color: green;">■</span>	Round Numbers <b>NS.2.1.d_1</b> <span style="color: orange;">■</span>	Identify Fractions <b>NS.2.4.b_2</b> <span style="color: orange;">■</span>	Dot Plots <b>PS.2.15.b_2</b> <span style="color: gray;">■</span>
Convert Numbers <b>NS.2.1.a_1</b> <span style="color: orange;">■</span>	Skip Count <b>NS.2.2.a_1</b> <span style="color: orange;">■</span>	Unit Fractions <b>NS.2.4.b_3</b> <span style="color: orange;">■</span>	Pictographs <b>PS.2.15.b_3</b> <span style="color: gray;">■</span>
Forms of Numbers <b>NS.2.1.a_2</b> <span style="color: orange;">■</span>	Even / Odd <b>NS.2.2.c_1</b> <span style="color: orange;">■</span>	Unit Fractions <b>NS.2.4.c_1</b> <span style="color: orange;">■</span>	Scale for Graphs <b>PS.2.15.b_4</b> <span style="color: gray;">■</span>
More or Less Than <b>NS.2.1.b_1</b> <span style="color: orange;">■</span>	Ordinal Numbers <b>NS.2.3.b_1</b> <span style="color: orange;">■</span>	Skip Count <b>PFA.2.16_1</b> <span style="color: blue;">■</span>	
Skip Count <b>NS.2.1.b_2</b> <span style="color: orange;">■</span>	Identify Fractions <b>NS.2.4.a_1</b> <span style="color: orange;">■</span>	Scale for Graphs <b>PS.2.15.a_1</b> <span style="color: gray;">■</span>	
Compare and Order Numbers <b>NS.2.1.c_1</b> <span style="color: orange;">■</span>	Add and Subtract Fractions <b>NS.2.4.b_1</b> <span style="color: orange;">■</span>	Bar Graphs <b>PS.2.15.b_1</b> <span style="color: gray;">■</span>	

**Strands (Kindergarten - Grade 5):**

- Computation and Estimation (CE)
- Patterns, Functions and Algebra (PFA)
- Measurement and Geometry (MG)
- Number and Number Sense (NS)
- Probability and Statistics (PS)





Add Multiples of Powers of 10

**CE.3.3.a\_1** ■

Estimate Sums and Differences

**CE.3.3.a\_2** ■

Solve Multi-Step Addition or Subtraction Problems

**CE.3.3.a\_3** ■

Add 2-Digit Numbers

**CE.3.3.b\_1** ■

Add Multiples of Powers of 10

**CE.3.3.b\_2** ■

Subtract Multiples of Powers of 10

**CE.3.3.b\_3** ■

Arrays

**CE.3.4.a\_1** ■

Divide 12 to 20

**CE.3.4.a\_2** ■

Divide 21 to 30

**CE.3.4.a\_3** ■

Divide 32 to 40

**CE.3.4.a\_4** ■

Divide 4 to 10

**CE.3.4.a\_5** ■

Divide 42 to 60

**CE.3.4.a\_6** ■

Divide 63 to 100

**CE.3.4.a\_7** ■

Division Table: 2, 5, 10

**CE.3.4.a\_8** ■

Division Table: 3, 4, 8, 6, 9, 7

**CE.3.4.a\_9** ■

Doubling and Halving

**CE.3.4.a\_10** ■

Identify Correct Multiplication or Division Equation

**CE.3.4.a\_11** ■

Inverse Relationships

**CE.3.4.a\_12** ■

Multiply with 8

**CE.3.4.a\_13** ■

Skip Count

**CE.3.4.a\_14** ■

Unknown Numbers in Division

**CE.3.4.a\_15** ■

Arrays

**CE.3.4.b\_1** ■

Division Table: 2, 5, 10

**CE.3.4.b\_2** ■

Multiplication and Division Word Problems

**CE.3.4.b\_3** ■

Multiply with 6

**CE.3.4.b\_4** ■

Multiply with 9 or 7

**CE.3.4.b\_5** ■

Related Division Questions

**CE.3.4.b\_6** ■

Related Multiplication Questions

**CE.3.4.b\_7** ■

Unknown Numbers in Division

**CE.3.4.b\_8** ■

Unknown Numbers in Multiplication

**CE.3.4.b\_9** ■

Doubling and Halving

**CE.3.4.c\_1** ■

Identify Correct Multiplication or Division Equation

**CE.3.4.c\_2** ■

Inverse Relationships

**CE.3.4.c\_3** ■

Multiply with 1

**CE.3.4.c\_4** ■

Multiply with 10 through 6

**CE.3.4.c\_5** ■

Multiply with 10, 7 to 10

**CE.3.4.c\_6** ■

Multiply with 2 through 5

**CE.3.4.c\_7** ■

Multiply with 2, 6 to 10

**CE.3.4.c\_8** ■

Multiply with 5 through 5

**CE.3.4.c\_9** ■

Multiply with 5, 6 to 10

**CE.3.4.c\_10** ■

## Strands (Kindergarten - Grade 5):

■ Computation and Estimation (CE)

■ Patterns, Functions and Algebra (PFA)

■ Measurement and Geometry (MG)

■ Number and Number Sense (NS)

■ Probability and Statistics (PS)

Highlight  
and  
annotate  
me

**HINT:**  
You can focus  
learners easily  
on any skill to  
match your  
classroom  
lesson



Related Multiplication Questions <b>CE.3.4.c_11</b>	Volume <b>MG.3.7.b_1</b>	Sequences <b>MG.3.9.c_2</b>	Turns <b>NS.3.2.a_3</b>
Unknown Numbers in Multiplication <b>CE.3.4.c_12</b>	Perimeter <b>MG.3.8.a_1</b>	Forms of Numbers <b>NS.3.1.a_1</b>	Compare, Order, and Sequence Fractions <b>NS.3.2.c_1</b>
Multiplication and Division Word Problems <b>CE.3.4.d_1</b>	Area <b>MG.3.8.b_1</b>	Round Numbers <b>NS.3.1.b_1</b>	Sequences <b>PFA.3.16_1</b>
Add and Subtract Fractions <b>CE.3.5_1</b>	Telling Time <b>MG.3.9.a_1</b>	Compare and Order Numbers <b>NS.3.1.c_1</b>	Skip Count <b>PFA.3.16_2</b>
Polygons <b>MG.3.12.b_1</b>	Elapsed Time <b>MG.3.9.b_1</b>	Fractions as Words <b>NS.3.2.a_1</b>	
	Convert Time <b>MG.3.9.c_1</b>	Fractions Greater than 1 <b>NS.3.2.a_2</b>	

**Strands (Kindergarten - Grade 5):**

- Computation and Estimation (CE)
- Measurement and Geometry (MG)
- Probability and Statistics (PS)
- Patterns, Functions and Algebra (PFA)
- Number and Number Sense (NS)







Division and Times Tables <b>CE.4.4.a_1</b>	Related Division Equation <b>CE.4.4.a_12</b>	Multiply with 3-Digit Numbers <b>CE.4.4.b_10</b>	Add within 1,000,000 <b>CE.4.4.d_1</b>
Multiply Three Numbers <b>CE.4.4.a_2</b>	Add within 1,000,000 <b>CE.4.4.b_1</b>	Multiply with 4-Digit Numbers <b>CE.4.4.b_11</b>	Column Subtraction <b>CE.4.4.d_2</b>
Multiply with 11, 7 to 12 <b>CE.4.4.a_3</b>	Arrays <b>CE.4.4.b_2</b>	Subtract within 10,000 <b>CE.4.4.b_12</b>	Division and Times Tables <b>CE.4.4.d_3</b>
Multiply with 11, through 6 <b>CE.4.4.a_4</b>	Column Subtraction <b>CE.4.4.b_3</b>	Divide 2- or 3-Digit Numbers by 1-Digit Numbers <b>CE.4.4.c_1</b>	Model Multiplying with 2-Digit Numbers <b>CE.4.4.d_4</b>
Multiply with 12, 7 to 12 <b>CE.4.4.a_5</b>	Estimate Addition and Subtraction <b>CE.4.4.b_4</b>	Divide 4-Digit Numbers by 1-Digit Numbers <b>CE.4.4.c_2</b>	Multi-Step Addition or Subtraction <b>CE.4.4.d_5</b>
Multiply with 12, through 6 <b>CE.4.4.a_6</b>	Estimate Multiplication <b>CE.4.4.b_5</b>	Divide by Multi-Digit Numbers <b>CE.4.4.c_3</b>	Multiply with 2-Digit Numbers <b>CE.4.4.d_6</b>
Multiply with 3, 7 to 9 <b>CE.4.4.a_7</b>	Model Multiplying with 2-Digit Numbers <b>CE.4.4.b_6</b>	Divide Multi-Digit Numbers <b>CE.4.4.c_4</b>	Multiply with 3-Digit Numbers <b>CE.4.4.d_7</b>
Multiply with 3, through 6 <b>CE.4.4.a_8</b>	Multi-Step Addition or Subtraction <b>CE.4.4.b_7</b>	Division Word Problems <b>CE.4.4.c_5</b>	Subtract within 10,000 <b>CE.4.4.d_8</b>
Multiply with 4 <b>CE.4.4.a_9</b>	Multiply by Multiples of Powers of 10 <b>CE.4.4.b_8</b>	Estimate Division <b>CE.4.4.c_6</b>	Factors <b>CE.4.5.a_1</b>
Multiply with 6, 9, or 7 <b>CE.4.4.a_10</b>	Multiply with 2-Digit Numbers <b>CE.4.4.b_9</b>	Mental Math: Division <b>CE.4.4.c_7</b>	Multiply Three Numbers <b>CE.4.5.a_2</b>
Multiply with 8 <b>CE.4.4.a_11</b>			

### Strands (Kindergarten - Grade 5):

- Computation and Estimation (CE)
- Measurement and Geometry (MG)
- Probability and Statistics (PS)
- Patterns, Functions and Algebra (PFA)
- Number and Number Sense (NS)

Highlight  
and  
annotate  
me

**HINT:**  
You can focus  
learners easily  
on any skill to  
match your  
classroom  
lesson



Add Fractions <b>CE.4.5.b_1</b> ■	Add and Subtract with Three Decimal Places <b>CE.4.6.a_2</b> ■	Perimeter <b>MG.4.7_5</b> ■	Place Value <b>NS.4.1.a_1</b> ■
Add Fractions with Like Denominators <b>CE.4.5.b_2</b> ■	Add and Subtract with Two Decimal Places <b>CE.4.6.a_3</b> ■	Perimeter of Composite Figures <b>MG.4.7_6</b> ■	Compare and Order Numbers <b>NS.4.1.b_1</b> ■
Inverse Relationships, Fractions <b>CE.4.5.b_3</b> ■	Lines, Segments, Angles, and Rays <b>MG.4.10.a_1</b> ■	Weight <b>MG.4.8.b_1</b> ■	Integers <b>NS.4.1.b_2</b> ■
Multiply Unit Fractions <b>CE.4.5.b_4</b> ■	Lines, Segments, Angles, and Rays <b>MG.4.10.b_1</b> ■	Add and Subtract Measures <b>MG.4.8.c_1</b> ■	Round Numbers <b>NS.4.1.c_1</b> ■
Subtract Fractions <b>CE.4.5.b_5</b> ■	2D and 3D Shapes <b>MG.4.11_1</b> ■	Compare Measures <b>MG.4.8.c_2</b> ■	Equivalent Fractions <b>NS.4.2.b_1</b> ■
Subtract Fractions with Like Denominators <b>CE.4.5.b_6</b> ■	Area <b>MG.4.7_1</b> ■	Convert Measures with Whole Numbers <b>MG.4.8.c_3</b> ■	Tenths and Hundredths <b>NS.4.2.b_2</b> ■
Add Fractions <b>CE.4.5.c_1</b> ■	Area of Quadrilaterals <b>MG.4.7_2</b> ■	Convert Measures, Mixed Units <b>MG.4.8.c_4</b> ■	Fraction as Division <b>NS.4.2.c_1</b> ■
Subtract Fractions <b>CE.4.5.c_2</b> ■	Area of Rectangles <b>MG.4.7_3</b> ■	Compare Measures <b>MG.4.8.d_1</b> ■	Read Decimals <b>NS.4.3.a_1</b> ■
Add and Subtract Tenths <b>CE.4.6.a_1</b> ■	Model Multiplying with 2-Digit Numbers <b>MG.4.7_4</b> ■	Elapsed Time <b>MG.4.9_1</b> ■	Round Decimals <b>NS.4.3.b_1</b> ■
		Future and Past Times <b>MG.4.9_2</b> ■	Compare Decimals <b>NS.4.3.c_1</b> ■

**Strands (Kindergarten - Grade 5):**

- Computation and Estimation (CE)
- Measurement and Geometry (MG)
- Probability and Statistics (PS)
- Patterns, Functions and Algebra (PFA)
- Number and Number Sense (NS)

Highlight  
and  
annotate  
me

**HINT:**  
You can focus  
learners easily  
on any skill to  
match your  
classroom  
lesson



Order Decimals <b>NS.4.3.c_2</b>	Number Patterns <b>PFA.4.15_1</b>	2 Times table (fluent)	5 Times table (fluent)
Tenths and Hundredths <b>NS.4.3.d_1</b>	Line Graphs <b>PS.4.14.b_1</b>	3 Times table (fluent)	10 Times table (fluent)
		4 Times table (fluent)	

**Strands (Kindergarten - Grade 5):**

- Computation and Estimation (CE)
- Measurement and Geometry (MG)
- Probability and Statistics (PS)
- Patterns, Functions and Algebra (PFA)
- Number and Number Sense (NS)





Dot Plots <b>CE.5.4_1</b>	■
Multi-Step Multiplication and Division Problems <b>CE.5.4_2</b>	■
Multiply and Divide by Powers of 10 <b>CE.5.4_3</b>	■
Multiply and Divide by Powers of 10 <b>CE.5.5.a_1</b>	■
Multiply and Divide Decimals <b>CE.5.5.a_2</b>	■
Multiply and Divide Decimals <b>CE.5.5.b_1</b>	■
Add Fractions <b>CE.5.6.a_1</b>	■
Multiplying with Fractions <b>CE.5.6.b_1</b>	■
Expressions and Equations <b>CE.5.7_1</b>	■
Multi-Step Multiplication and Division Problems <b>CE.5.7_2</b>	■

Circles <b>MG.5.10_1</b>	■
Angles <b>MG.5.12_1</b>	■
Triangles <b>MG.5.13.a_1</b>	■
Triangles <b>MG.5.13.b_1</b>	■
Shape Transformations on Coordinate Grid <b>MG.5.14.a_1</b>	■
Transformations <b>MG.5.14.a_2</b>	■
Vertical and Horizontal Changes on Coordinate Grid <b>MG.5.14.a_3</b>	■
Add Measures of Volume <b>MG.5.8.a_1</b>	■
Find Volume from Pictures <b>MG.5.8.a_2</b>	■
Find Volume with Formulas <b>MG.5.8.a_3</b>	■

Perimeter and Area <b>MG.5.8.a_4</b>	■
Volume Word Problems <b>MG.5.8.a_5</b>	■
Convert Decimal-Number Metric Measures <b>MG.5.9.a_1</b>	■
Convert Whole-Number Metric Measures <b>MG.5.9.a_2</b>	■
Measurement Tables <b>MG.5.9.a_3</b>	■
Round Decimals <b>NS.5.1_1</b>	■
Convert Between Fractions and Decimals <b>NS.5.2.a_1</b>	■
Compare and Order Fractions <b>NS.5.2.b_1</b>	■
Prime and Composite <b>NS.5.3.a_1</b>	■
Numerical Sequences <b>PFA.5.18_1</b>	■

Comparison Word Problems <b>PFA.5.19.b_1</b>	■
Write Expressions <b>PFA.5.19.c_1</b>	■
Line Plots <b>PS.5.16.b_1</b>	■
Stem and Leaf Plots <b>PS.5.16.b_2</b>	■
Describe Statistical Data <b>PS.5.17.c_1</b>	■
Describe Statistical Data <b>PS.5.17.d_1</b>	■
Dot Plots <b>PS.5.17.d_2</b>	■
Stem and Leaf Plots <b>PS.5.17.d_3</b>	■
6 Times table (fluent)	■
7 Times table (fluent)	■
8 Times table (fluent)	■
9 Times table (fluent)	■
11 Times table (fluent)	■
12 Times table (fluent)	■

### Strands (Kindergarten - Grade 5):

- Computation and Estimation (CE)
- Measurement and Geometry (MG)
- Probability and Statistics (PS)
- Patterns, Functions and Algebra (PFA)
- Number and Number Sense (NS)

Highlight  
and  
annotate  
me

**HINT:**  
You can focus  
learners easily  
on any skill to  
match your  
classroom  
lesson



Numerical expressions involving whole-numbers

**6.EE.A.1** ■

Identify parts of an expression

**6.EE.A.2.b** ■

Write, read, and evaluate expressions

**6.EE.A.2.c** ■

Apply the properties of operations

**6.EE.A.3** ■

Identify when two expressions are equivalent

**6.EE.A.4** ■

Understand solving an equation or inequality

**6.EE.B.5** ■

Use variables to represent numbers

**6.EE.B.6** ■

Solve problems by writing equations

**6.EE.B.7** ■

Write an inequality of the form to represent a constraint or condition

**6.EE.B.8** ■

Use variables to represent two quantities in a real-world problem

**6.EE.C.9** ■

Find the area of right triangles, other triangles

**6.G.A.1** ■

Find the volume of a right rectangular prism with fractional edge lengths

**6.G.A.2** ■

Draw polygons in the coordinate plane given coordinates for the vertices

**6.G.A.3** ■

Part 1 - Represent three-dimensional figures using nets made up of rectangles and triangles

**6.G.A.4** ■

Part 2 - Represent three-dimensional figures using nets made up of rectangles and triangles

**6.G.A.4** ■

Interpret and compute quotients of fractions

**6.NS.A.1** ■

Fluently divide multi-digit numbers using the standard algorithm.

**6.NS.B.2** ■

Fluently add, subtract, multiply, and divide multi-digit decimals

**6.NS.B.3** ■

Find the greatest common factor of two whole numbers less than or equal to 100

**6.NS.B.4** ■

Understand that positive and negative number are used together to describe quantities

**6.NS.C.5** ■

Recognize opposite signs of numbers as indicating locations on the number line

**6.NS.C.6.a** ■

Understand signs of numbers in quadrants of the coordinate plane

**6.NS.C.6.b** ■

Understand a rational number as a point on the number line.

**6.NS.C.6.c** ■

Interpret statements of inequality about the relative position of two numbers on

**6.NS.C.7.a** ■

Understand ordering and absolute value of rational numbers.

**6.NS.C.7.c** ■

Understand the concept of a ratio

**6.RP.A.1** ■

Understand the concept of a unit rate

**6.RP.A.2** ■

## Strands (Grade 6 – 8):

■ Expressions & Equations (EE)

■ Ratios & Proportional Relationships (RP)

■ Statistics & Probability (SP)

■ The Number System (NS)

■ Geometry (G)

■ Functions (F)

Highlight and annotate me

**HINT:**  
You can focus learners easily on any skill to match your classroom lesson



Make tables of equivalent ratios

**6.RP.A.3.a** ■

Solve unit rate problems including those involving unit pricing and constant speed.

**6.RP.A.3.b** ■

Part 2 - Use ratio and rate reasoning to solve real-world and mathematical problems

**6.RP.A.3.c** ■

Part 2 - Use ratio and rate reasoning to solve real-world and mathematical problems

**6.RP.A.3.c** ■

Use ratio and rate reasoning to solve real-world and mathematical problems

**6.RP.A.3.d** ■

Recognize a statistical question

**6.SP.A.1** ■

Recognize that a measure of centre for a numerical data set

**6.SP.A.3** ■

Display numerical data in plots on a number line

**6.SP.B.4** ■

Part 1 - Reporting the number of observations.

**6.SP.B.5.A** ■

Part 2 - Reporting the number of observations.

**6.SP.B.5.A** ■

Describing the nature of the attribute under investigation

**6.SP.B.5.B** ■

Part 1 - Summarize numerical data sets in relation to their context

**6.SP.B.5.c** ■

Part 2 - Summarize numerical data sets in relation to their context

**6.SP.B.5.c** ■

Part 3 - Summarize numerical data sets in relation to their context

**6.SP.B.5.c** ■

**Strands (Grade 6 - 8):**

■ Expressions & Equations (EE)

■ The Number System (NS)

■ Ratios & Proportional Relationships (RP)

■ Geometry (G)

■ Statistics & Probability (SP)

■ Functions (F)





Apply properties of operations

**7.EE.A.1** ■

Solve mathematical problems posed with positive and negative rational numbers

**7.EE.B.3** ■

Solve word problems leading to equations of the form  $px + q = r$  and  $p(x + q) = r$

**7.EE.B.4.a** ■

Solve word problems leading to inequalities of the form  $px + q > r$  or  $px + q < r$

**7.EE.B.4.b** ■

Describe the two-dimensional figures that result from slicing three-dimensional figures

**7.G.A.3** ■

Know the formulas for the area and circumference of a circle

**7.G.B.4** ■

Use facts about supplementary, complementary, vertical, and adjacent angles in a multi-step

**7.G.B.5** ■

Part 1 – Solve real-world and mathematical problems of two- and three-dimensional objects

**7.G.B.6** ■

Part 2 – Solve real-world and mathematical problems of two- and three-dimensional objects

**7.G.B.6** ■

Part 3 – Solve real-world and mathematical problems of two- and three-dimensional objects

**7.G.B.6** ■

Part 4 – Solve real-world and mathematical problems of two- and three-dimensional objects

**7.G.B.6** ■

Apply and extend previous understandings of addition and subtraction to add and subtract rational numbers

**7.NS.A.1** ■

Understand  $p + q$  as the number located a distance  $|q|$  from  $p$ , in the positive or negative direction depending on whether  $q$  is positive or negative.

**7.NS.A.1.b** ■

Understand subtraction of rational numbers as adding the additive inverse,  $p - q = p + (-q)$ .

**7.NS.A.1.c** ■

Apply and extend previous understandings of addition and subtraction to add and subtract rational numbers

**7.NS.A.1.d** ■

Apply and extend previous understandings of multiplication and division and of fractions to multiply and divide rational numbers.

**7.NS.A.2.c** ■

Apply and extend previous understandings of multiplication and division and of fractions to multiply and divide rational numbers.

**7.NS.A.2.d** ■

Part 1 – Solve real-world and mathematical problems involving the four operations with rational numbers.

**7.NS.A.3** ■

Part 2 – Solve real-world and mathematical problems involving the four operations with rational numbers.

**7.NS.A.3** ■

## Strands (Grade 6 – 8):

■ Expressions & Equations (EE)

■ The Number System (NS)

■ Ratios & Proportional Relationships (RP)

■ Geometry (G)

■ Statistics & Probability (SP)

■ Functions (F)

Highlight and annotate me

**HINT:**  
You can focus learners easily on any skill to match your classroom lesson



Part 3 – Solve real-world and mathematical problems involving the four operations with rational numbers.

**7.NS.A.3** ■

Part 4 – Solve real-world and mathematical problems involving the four operations with rational numbers.

**7.NS.A.3** ■

Recognize and represent proportional relationships between quantities.

**7.RP.A.2.a** ■

Recognize and represent proportional relationships between quantities.

**7.RP.A.2.b** ■

Recognize and represent proportional relationships between quantities.

**7.RP.A.2.c** ■

Part 1 – Use proportional relationships to solve multistep ratio and percent problems.

**7.RP.A.3** ■

Part 2 – Use proportional relationships to solve multistep ratio and percent problems.

**7.RP.A.3** ■

Understand that statistics can be used to gain information about a population by examining a sample of the population

**7.SP.A.1** ■

Use data from a random sample to draw inferences about a population with an unknown characteristic of interest.

**7.SP.A.2** ■

Understand that the probability of a chance event is a number between 0 and 1 that expresses the likelihood of the event occurring.

**7.SP.C.5** ■

Develop a probability model and use it to find probabilities of events.

**7.SP.C.7.a** ■

Understand that the probability of a compound event is the fraction of outcomes in the sample space for which the compound event occurs.

**7.SP.C.8.A** ■

Find probabilities of compound events using lists, tables, tree diagrams, and simulation.

**7.SP.C.8.** ■

**Strands (Grade 6 – 8):**

■ Expressions & Equations (EE)

■ The Number System (NS)

■ Ratios & Proportional Relationships (RP)

■ Geometry (G)

■ Statistics & Probability (SP)

■ Functions (F)





# Sumdog Assessment Library



Using our assessment library, you can select a pre-made assessment that is matched to the Mathematics Standards from the Common Core State Standards.

We have an assessment for each unit and have mapped them to our progression framework. Our detailed report can easily be exported and printed to save for your tracking and monitoring evidence.

<b>Grades K-5</b>	<b>Kindergarten</b>	<b>5 Assessments</b>
	<b>Grade 1</b>	<b>4 Assessments</b>
	<b>Grade 2</b>	<b>4 Assessments</b>
	<b>Grade 3</b>	<b>5 Assessments</b>
	<b>Grade 4</b>	<b>6 Assessments</b>
	<b>Grade 5</b>	<b>6 Assessments</b>
<b>Grades 6-8</b>	<b>Grade 6</b>	<b>8 Assessments</b>
	<b>Grade 7</b>	<b>6 Assessments</b>
	<b>Grade 8</b>	<b>7 Assessments</b>

**REMEMBER:**  
You can also  
create your own  
custom assessments  
on Sumdog. Selecting  
the standards you  
want to assess.

# Teacher Planning Template



Class/Student Name:

Grade:

	SEMESTER 1	SEMESTER 2	SEMESTER 3	SEMESTER 4
Teacher Notes				
Challenges				
Focus Skills				
Sumdog Assessments				
Sumdog Homework				



Have any questions about our scheme of learning?  
Visit [www.sumdog.com](http://www.sumdog.com) to find out more.